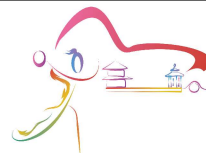




# 10th IHF Women's Youth World Championship 2024



Final Round, 13-16. place

Results  
Match No. 89

**Sweden 33 - 27 P.R. of China**  
(17 - 11) (16 - 16)

22.8.2024. 15:45  
Attendance: 2005  
International Handball Hall

Referees: Ismailj Metalari (MKD) / Nenad Nikolovski (MKD)

## Sweden

Players		Goals/shots									Attack			Defense		
#	Surname and name	S	Tot.	%	9m	6m	Wing	7m	Fst.	Brk.	LD	As	E7	TF	St.	2m
1	MELIN Mathilda															
2	KINDAHL Linnéa		2/5	40		1/1	1/1		0/2	0/1		1				
3	SVENSSON Moa	S	2/5	40			1/4			1/1		4		2	1	
6	HUSELIUS Nova	S	5/7	71		1/1		3/4		1/2		3		6		
8	BERGLUND Julia	S	1/1	100			1/1									
9	NORRGARD Meja		3/3	100	1/1		1/1			1/1						1
10	LÖF Astrid	S	4/6	67	1/2					3/4			1	1	1	
11	MIELKE Cassandra		4/8	50	2/6					2/2		3		1		2
12	SAUL Wilma	S														
15	LINDBERG Isa	S	0/2		0	0/2						1				
16	DANIELSSON Anna															
17	PORTILLO Maja	S	3/4	75		2/3			1/1			1				
18	RYDÉN Isabelle		2/4	50		2/4							2		1	
32	LILJA Smilla		3/5	60	2/3				0/1	1/1				2		
33	JOHANSSON Thella		4/4	100		1/1	3/3									
	Team / bench															
	<b>TOTAL</b>		<b>33/54</b>	<b>61</b>	<b>6/14</b>	<b>7/10</b>	<b>7/10</b>	<b>3/4</b>	<b>1/4</b>	<b>9/12</b>	<b>0/0</b>	<b>13</b>	<b>3</b>	<b>12</b>	<b>4</b>	<b>2</b>

Goalkeepers		Saves / shots								
#	Surname and name	Tot.	%	9m	6m	Wing	7m	Fst.	Brk.	LD
1	MELIN Mathilda									
12	SAUL Wilma	20/47	43	5/10	1/9	4/12	2/3	2/4	6/9	
16	DANIELSSON Anna									
	<b>TOTAL</b>	<b>20/47</b>	<b>43</b>	<b>5/10</b>	<b>1/9</b>	<b>4/12</b>	<b>2/3</b>	<b>2/4</b>	<b>6/9</b>	<b>0/0</b>

Coach: Frenne Baverud

## P.R. of China

Players		Goals/shots									Attack			Defense		
#	Surname and name	S	Tot.	%	9m	6m	Wing	7m	Fst.	Brk.	LD	As	E7	TF	St.	2m
1	SUN Yihan	S														
2	HU Jiaxin		0/1	0			0/1									
3	PAN Fengying	S	2/7	29	1/1	1/1		0/1	0/1	0/3		6		4	3	
5	HUANG Zidie		6/12	50			5/8	0/1	1/2	0/1				1	2	
6	ZHANG Jingwen													1	1	
8	LIANG Jing	S	3/6	50	2/4	1/1				0/1		2	1	2	1	
9	XIN Ying	S	3/3	100			3/3					3				
10	LI Xinyi		2/4	50	0/1	1/1		1/1		0/1				1		
11	YANG Jie	S	2/3	67		1/1	0/1			1/1						
15	YANG Yue	S	2/2	100		2/2								3		1
16	HUANG Sitong															
17	LIU Yutong													1		
18	ZHANG Jiarui		2/3	67	2/3							1	1	2		
19	LI Ziai		2/2	100		1/1			1/1							1
21	XING Ziyan	S	3/6	50	0/2	1/2				2/2		3	1	1		
23	ZHENG Yun															
	Team / bench															
	<b>TOTAL</b>		<b>27/49</b>	<b>55</b>	<b>5/11</b>	<b>8/9</b>	<b>8/13</b>	<b>1/3</b>	<b>2/4</b>	<b>3/9</b>	<b>0/0</b>	<b>15</b>	<b>3</b>	<b>16</b>	<b>7</b>	<b>2</b>

Goalkeepers		Saves / shots								
#	Surname and name	Tot.	%	9m	6m	Wing	7m	Fst.	Brk.	LD
1	SUN Yihan	9/41	22	3/9	2/9	1/8	1/3	2/3	0/9	
16	HUANG Sitong	2/3	67		1/1		0/1		1/1	
	<b>TOTAL</b>	<b>11/44</b>	<b>25</b>	<b>3/9</b>	<b>3/10</b>	<b>1/8</b>	<b>1/4</b>	<b>4/3</b>	<b>1/10</b>	<b>0/0</b>

Coach: Qiang Shen

## 1. period

Portillo M.	1	(1')	0
Svensson M.	2	(3')	0
	2	(5')	1 Yang J.
Löf A.	3	(5')	1
	3	(6')	2 Li X.
	3	(7')	3 Yang Y.
	3	(8')	4 Liang J.
Berglund J.	4	(8')	4
Huselius N.	5	(10')	4
Huselius N.	6	(11')	4
	6	(12')	5 Liang J.
	6	(13')	6 Huang Z.
Löf A.	7	(14')	6
Johansson T.	8	(19')	6
Rydén I.	9	(20')	6
Johansson T.	10	(21')	6
	10	(22')	7 Li X.
Lilja S.	11	(23')	7
	11	(23')	8 Zhang J.
Mielke C.	12	(23')	8
Mielke C.	13	(25')	8
	13	(25')	9 Yang J.
Lilja S.	14	(26')	9
	14	(27')	10 Zhang J.
Lilja S.	15	(27')	10
Kindahl L.	16	(30')	10
	16	(30')	11 Xing Z.
Rydén I.	17	(30')	11

## 2. period

	17	(31')	12 Xin Y.
Norrgard M.	18	(31')	12
Johansson T.	19	(33')	12
Portillo M.	20	(33')	12
	20	(34')	13 Huang Z.
	20	(34')	14 Li Z.
Kindahl L.	21	(35')	14
	21	(36')	15 Xing Z.
Huselius N.	22	(37')	15
	22	(37')	16 Huang Z.
Huselius N.	23	(37')	16
	23	(38')	17 Liang J.
	23	(39')	18 Li Z.
	23	(40')	19 Huang Z.
Johansson T.	24	(40')	19
Norrgard M.	25	(42')	19
	25	(42')	20 Xing Z.
	25	(43')	21 Yang Y.
Norrgard M.	26	(43')	21
	26	(44')	22 Huang Z.
Mielke C.	27	(45')	22
	27	(45')	23 Xin Y.
Mielke C.	28	(46')	23
Löf A.	29	(50')	23
Löf A.	30	(51')	23
Huselius N.	31	(53')	23
	31	(54')	24 Pan F.
	31	(55')	25 Xin Y.
	31	(59')	26 Huang Z.
Svensson M.	32	(59')	26
Portillo M.	33	(60')	26
	33	(60')	27 Pan F.

# Jersey number Tot. Total shooting 6m 6m (line) sh. 9m 9m shooting Wng Wing shooting Fst. Fastbreak sh. 7m 7m penalty sh. LD Long distance  
Brk. Breakthrough As. Assists E7 Earned 7m TF Technical Faults St. Steals 2m 2m suspensions S Starting line-up

Handball statistics and livescore by Toma-soft ltd (www.toma-soft.hr)